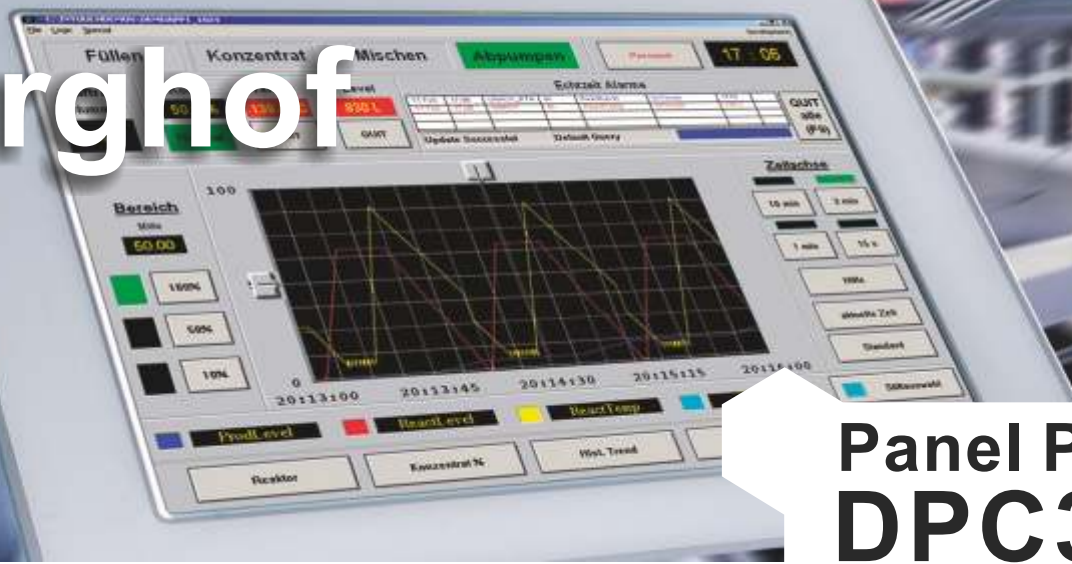


Berghof



Panel PC DPC3000

Outstanding - flexible - economical

- Robust and fanless metal housing
- Touch or key front with 10", 12" oder 15" TFT screen
- Aluminium front panel



BERGHOF

*realizing
your
ideas.*

Robust IPC solutions at attractive prices

Machines and plants are being built increasingly compactly. The DPC3000 Berghof Panel PC series sets standards.

DPC3000 facilitates individual, economically efficient PC solutions. While it is open for customer-specific adaptations, the DPC series integrates seamlessly, both visually and technically, into your machines and plants.

Why don't you combine product quality, individual equipment and technical performance with an attractive price?

A worthwhile strategy for you.

The right front for each application

Together with the touch or key front, 3 screen versions with 10.4", 12.1", and 15" (TFT) offer a great degree of freedom for configuration.

Low maintenance

through the elimination of moving parts and the use of long-life backlighting.

Service-friendly

access through a service flap for easy backlight, FLASH card and battery replacement as well as captive housing screws.

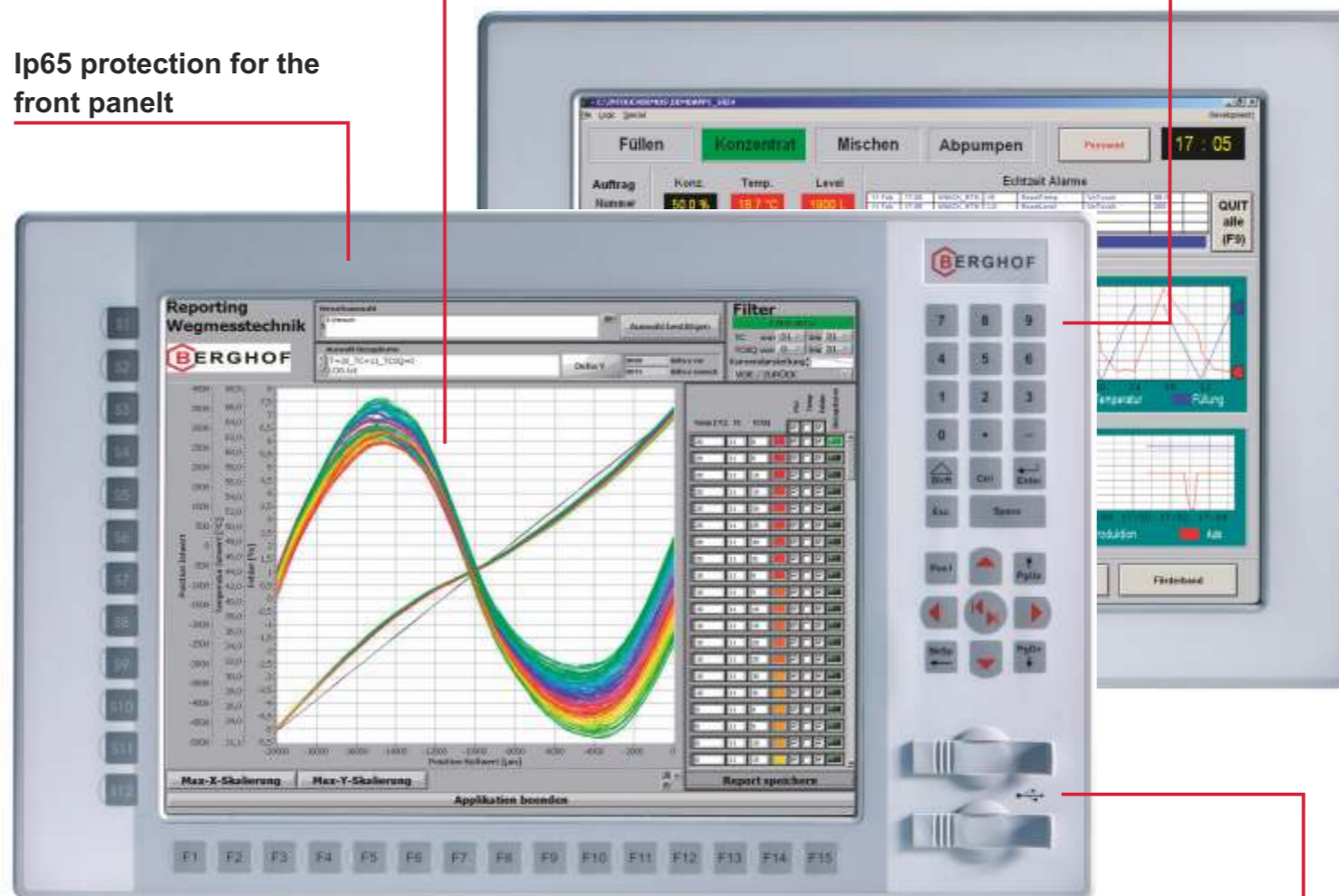
Fanless operation up to 50° C

Passive heat dissipation by large cooling surfaces.

Touch and/or keypad operation

10" to 15" TFT display

Ip65 protection for the front panel



Scaleable computing power

from a Geode™-CPU up to Intel® Atom® processor.

Flexible Speicherkonfiguration

Onboard steckbare CF-Card

Modular expansion capability

PC 104+ plug-in port

Monitoring functions

Temperature and voltage monitoring with actual and maximum value acquisition

Integrated parameter memory

Vital system parameters remain available, even after CF card replacement

Interfaces

CAN, Ethernet and others already onboard

Attractive software packages

CAN, CoDeSys-Soft-SPS, InTouch (preinstalled)

USB port

with easily closeable IP65 cover

High quality, stainless steel housing

Compact design

Outstanding and robust by high quality materials

Flexible by intermateable assembly dimensions and scalable processing power

Economical due to individual design requirements



Holger Liedermann
Key Account Manager

„We give top priority to your requirements. The variable design of the DPC3000 is the ideal basis for your customised PC. We are accustomed to long-term delivery obligations and a robust PC for the industrial production sector.“





Compact-Touch

10,4" / 12,1" / 15" Display

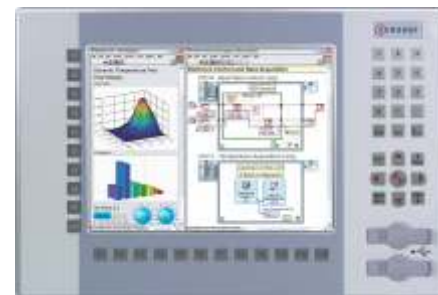
Minimum dimensions and Touch control make up this device.



Connect-Touch

12,1" / 15" Display

The CONNECT front is distinguished by the USB port at the front with IP65 cover.



Connect-Key

12,1" / 15" Display

Gloves are often needed on site. If this is the case, keys are simple and safe to use.

Technical datas

Processors	Intel Atom 1,6 Ghz, Geode LX-800, 500 MHz
Memory	RAM max. 2 GB (depending on the CPU) SRAM buffered to 32 kB accessible 4 GB Flash card
Cooling	passive cooling, fanless
Ambient temperature	0 ... 50° C
Interfaces	2 x Ethernet, also with EtherCAT USB, CAN, serial
Extensions	PC104+
Operating system	Windows embedded XP, Windows XP, Linux
Pre-installed software	Intouch, CoDeSys, Labview



*realizing
your
ideas.*

Berghof

Automationstechnik GmbH

Harretstrasse 1 • 72800 Eningen • Germany
Tel.: +49 7121 894-0 • Fax: +49 7121 894-100
controls@berghof.com • www.berghof.com

Branch Office Mühlhausen/Thuringia

Thüringer Straße 62 • 99974 Mühlhausen • Germany
Tel.: +49 3601 4777-0 • Fax: +49 3601 4777-10